

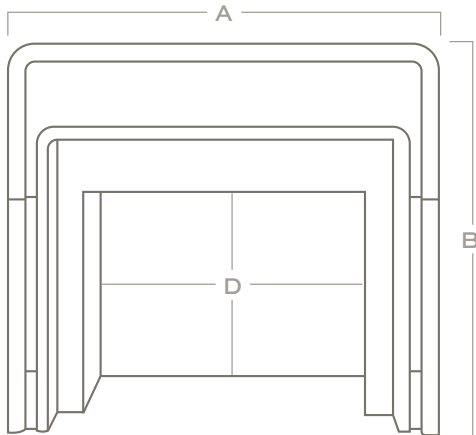
Tassilo

Edition No. 1-07

A true jewel, Tassilo blends modern proportions with classical references. The two continuous ribbons of stone highlight the warmth and comfort of the fire. With options for a metal frontispiece and alternate stone for the upper mantel, this piece can be fashioned to complement any room.



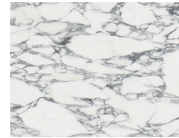
Top View



Front View

	GRANDE	STANDARD	EUROPEAN
WIDTH (A)	62"	58"	54"
HEIGHT (B)	55 1/2"	51 1/2"	47 1/2"
DEPTH (C)	10 3/8"	10 3/8"	10 3/8"
FIREBOX OPENING (D)	48" W x 40" H	44" W x 36" H	40" W x 32" H

STONE



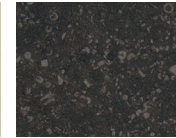
ARABESCATO CORCHIA



BIANCO AVORIO



BIANCO PERLINO



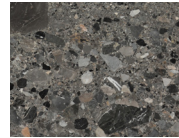
BELGIAN BLUESTONE



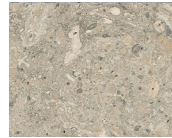
CALACATTA VIOLETTE



CAPPADOCIA



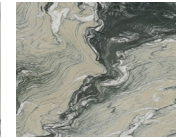
CEPPO DI GRE



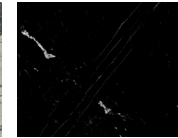
GRIGIO ALPI



LILAC



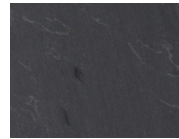
LUANA



NERO MARQUINA



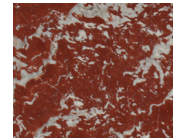
PICASSO



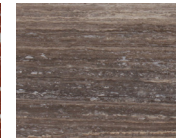
PIETRA DI CARDOSO



ROMAN OCEAN TRAVERTINE



ROUGE DE FRANCE



TITANIUM TRAVERTINE

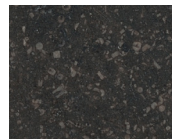


WHITE CARRARA

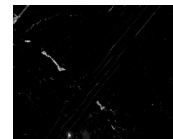
UPPER MANTEL - OPTIONAL



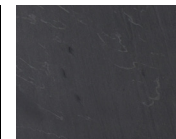
BIANCO PERLINO



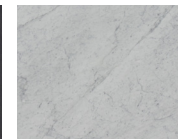
BELGIAN BLUESTONE



NERO MARQUINA

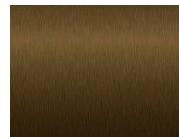


PIETRA DI CARDOSO

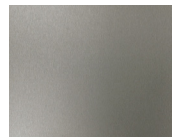


WHITE CARRARA

METAL - OPTIONAL



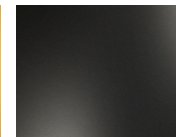
BRONZE



BRUSHED PEWTER



NATURAL BRASS



BLACKENED STEEL



BURNISHED BRASS