

Tassilo

Edition No. 2-07 Washstand

In the 36-inch Tassilo Washstand, metal, and stone flow together, drawn like lines from an artist's pencil. The honesty of structural elements, the precisely carved positive shape, and the negative space around it all contribute to the modern sensibility and an almost impossible feeling of weightlessness, while subtle details like the drip edge are inherently aesthetic yet purposeful.



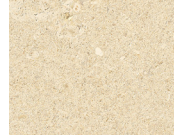
Front View

	OVERALL	WITHOUT METAL
WIDTH (A)	48" 121.92cm	42" 106.68cm
HEIGHT (B)	36 11/32" 92.32cm	
DEPTH (C)	22" 55.88cm	

STONE



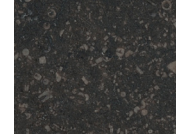
ARABESCATO CORCHIA



BIANCO AVORIO



BIANCO PERLINO



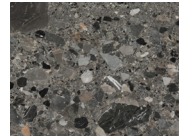
BELGIAN BLUESTONE



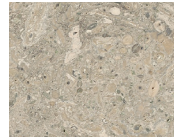
CALACATTA VIOLETTE



CAPPADOCIA



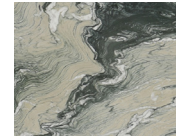
CEPPO DI GRE



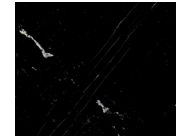
GRIGIO ALPI



LILAC



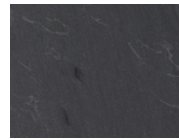
LUANA



NERO MARQUINA



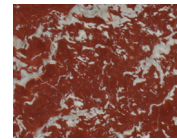
PICASSO



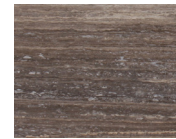
PIETRA DI CARDOSO



ROMAN OCEAN TRAVERTINE



ROUGE DE FRANCE

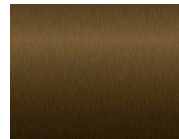


TITANIUM TRAVERTINE

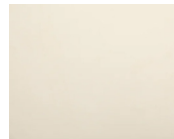


WHITE CARRARA

METAL (OPTIONAL)



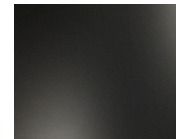
BRONZE



POLISHED NICKEL



NATURAL BRASS



BLACKENED BRASS



BURNISHED BRASS

Stone available in polished, honed, antiqued, and sandblasted & brushed.