

# Hamilton

Edition No. 3-12 Chef's Island

Unified and elegant, the Hamilton Chef's Island offers a grand platform for performance. Its impressive architecture is enhanced by fluted and reeded stone patterning, a distinct plinth, and subtle shadow lines. The configurable system allows architects & designers the flexibility to create multiple layouts to suit a variety of lifestyles.

Interiors are finished in solid walnut with dovetailed drawers and soft-close hardware.

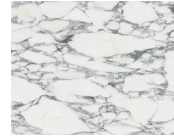
Solid Brass accents, available in a variety of finishes.

Shown in Arabescato Corchia with Burnished Brass. Plumbing fixtures not included.

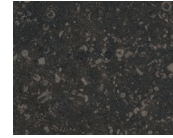
36-inch height as standard. Configurable with multiple cabinet types and widths offered to create starting at 7-feet in length. Inquire for details.



## STONE



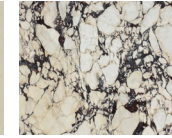
ARABESCATO  
CORCHIA



BELGIAN  
BLUESTONE



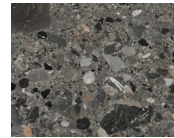
BIANCO  
PERLINO



CALACATTA  
VIOLETTE



CAPPADOCIA



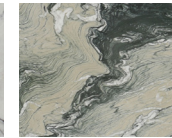
CEPPO  
DIGRE



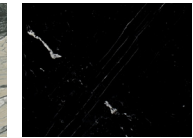
FRENCH  
VANILLA



LILAC



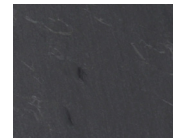
LUANA



NERO  
MARQUINA



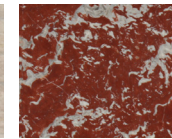
PICASSO



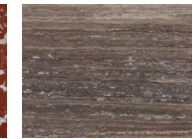
PIETRA  
DI CARDOSO



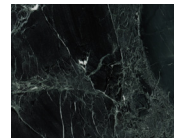
ROMAN OCEAN  
TRAVERTINE



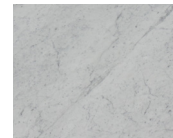
ROUGE  
DE FRANCE



TITANIUM  
TRAVERTINE

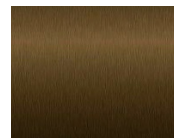


VERDE  
LEVANTO



WHITE  
CARRARA

## METAL



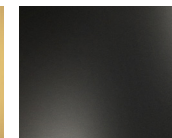
BRONZE



POLISHED  
NICKEL



NATURAL  
BRASS



BLACKENED  
BRASS



BURNISHED  
BRASS

Stone available in polished, honed, antiqued, and light sandblasted.