



# Sebastian

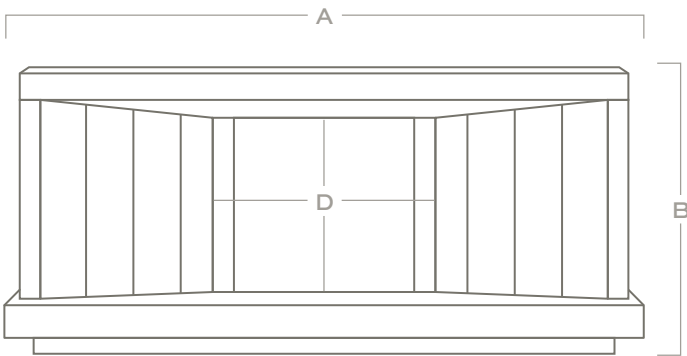
Edition No. 1-05

The Sebastian is a testament to materiality and craftsmanship with metal inlaid between vertical pleats and framing the firebox opening. With an integrated hearth floating above the floor plane, it is big and bold, commanding attention in any room.

*Patent pending.*



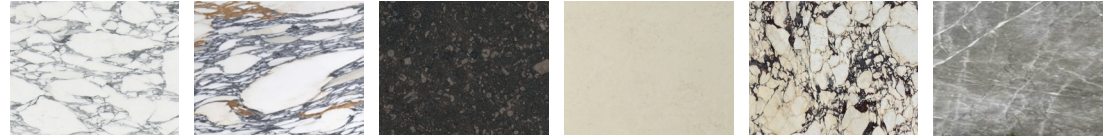
Top View



Front View

STANDARD	
WIDTH (A)	96" 244 cm
HEIGHT (B)	45 7/8" 117 cm
DEPTH (C)	12" 30 cm
FIREBOX OPENING (D)	43 1/2" W x 30" H 111cm W x 77cm H

## STONE



ARABESCATO CORCHIA

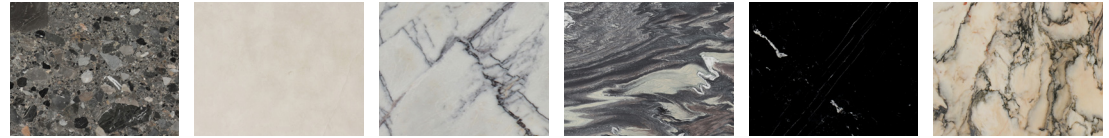
ARABESCATO CORCHIA ANTICO

BELGIAN BLUESTONE

BIANCO PERLINO

CALACATTA VIOLETTE

CAPPADOCIA



CEPPO DI GRE

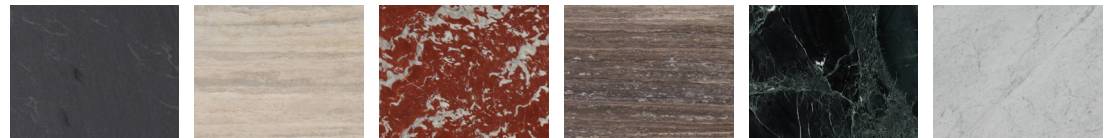
FRENCH VANILLA

LILAC

LUANA

NERO MARQUINA

PICASSO



PIETRA DI CARDOSO

ROMAN OCEAN TRAVERTINE

ROUGE DE FRANCE

TITANIUM TRAVERTINE

VERDE LEVANTO

WHITE CARRARA

## METAL (OPTIONAL)



BRONZE

BRUSHED PEWTER

NATURAL BRASS

BLACKENED BRASS

BURNISHED BRASS

Stone available in polished, honed, antiqued, and sandblasted & brushed.

Natural stone's unique variations are inherent to its beauty. Images shown are illustrative for general reference; delivered materials will have variations.